

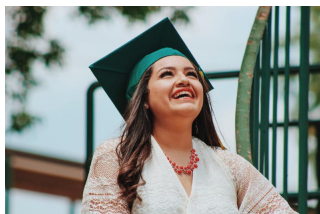
## Empower Local Refugees to Thrive



*Make a long-term impact on refugee families*

Greetings!

We have some exciting news. From now until December 31, 2017, Global Giving will grant PRERNA matching funds for all new recurring donations. [Take advantage of this offer by becoming a monthly donor](#) with a minimum of \$10 or more per month. In today's global refugee crisis, securing ongoing funds to help refugee families in the new year is more important than ever.



In 2018, PRERNA plans to scale up to help more local refugee families. To do this, we need predictable income in advance for long-term planning and decision-making. Your generous donations will support additional resources and new programs. Imagine starting a scholarship fund for refugee students when they graduate from high school so they can go to college.

A monthly gift will spread your donation across an entire year, which can lessen the financial impact of giving with a one-time donation. Recurring transactions are common today in our daily lives. Having the means to support new refugee families every month will make a difference no matter the size of your gift.

### HOW IT WORKS

New recurring donations made through Global Giving will be matched 1 to 1 up to \$200 per donor for the first month's donation. For example, if you set up a new \$50 recurring gift, PRERNA will receive a \$50 bonus. A \$25 monthly donation can give a family a pre-owned computer to use all year long. A \$40 recurring gift will provide 12 new families with welcome kits when they first arrive. This is a crucial time, as they begin rebuilding their lives with hope of a safe and better future.

[Make a greater impact by becoming a monthly recurring donor today.](#) Thank you for your support.



Get involved with PRERNA today to empower refugees.  
VOLUNTEER. DONATE. SHARE.